

Crown Automotive Fuel Tank Skid Plate

(97-06 Wrangler TJ)

Installation Guide

Installation Time: 60 Minutes

Tools Required:

- ½ inch socket
- Socket extension
- Philips screwdriver
- Floor jack (and piece of wood)



Crown Automotive Fuel Tank Skid Plate Includes:

- Fuel Tank Skid Plate only

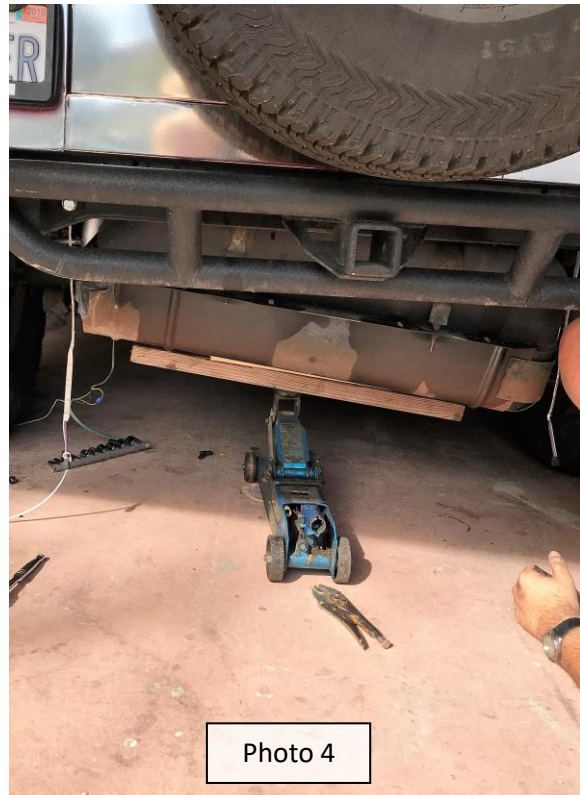
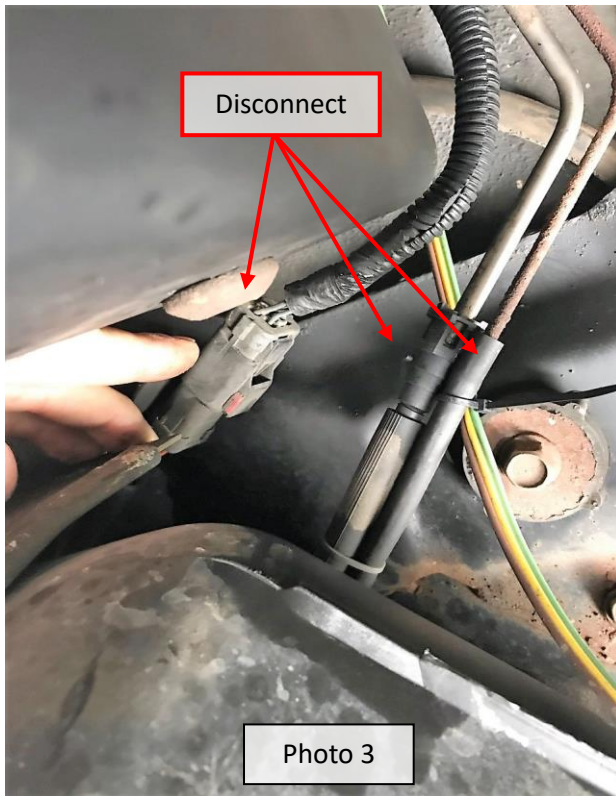


Installation Instructions:

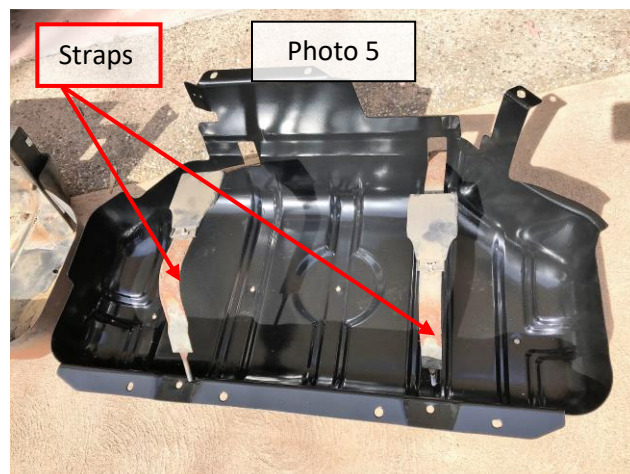
1. Open the hood and go to the elongated fuse box on the passenger's side of the jeep. Remove the Fuel Pump Relay (shown in Photo 1) which should be clearly marked. Then turn the ignition key, cranking the engine over a few times to depressurize the fuel system.



2. Go to the fuel tank fill area on the driver's side of the jeep (where you put fuel in the jeep). Use a Philips screwdriver and remove the four inner screws that hold the fuel tank filler cap and hose to the body of the jeep (Photo 2).
3. Located on the top of the fuel tank, on the driver's side of the jeep, you will find an electrical disconnect (for the fuel gauge) a vent rubber line, and the pressurized hard fuel line (Photo 3). These can easily be accessed under the jeep next to the driver's rear tire. Disconnect all three (a small amount of fuel will come out of the hard line).



4. Place a floor jack and piece of wood under the center of the fuel tank and lift the jack until the fuel tank is supported (Photo 4). Remove the 4 rear bolts and 3 front bolts that hold the existing fuel tank in place. Then slowly lower the tank, making sure to not snag or crimp the filler hose.
5. Once the fuel tank is down, remove the existing metal tank straps by loosening the nuts holding the tank straps to the fuel tank. Place the tank straps on the new fuel tank skid plate and reconnect the nuts (Photo 5).



6. Use the floor jack to jack the fuel tank back up into its original place guiding the fuel tank filler hose into its position and finger tighten the bolts on the fuel tank skid plate.
7. Reconnect the electrical disconnect, vent rubber line and hard fuel line that were disconnected in step 3.
8. Fully tighten the bolts holding the fuel tank skid plate in place.
9. Reattached and tighten the 4 Philip screws to the fuel tank filler cap and hose.
10. Reconnect the fuel pump relay.

Installation Instructions Written by ExtremeTerrain Customer Jessica Colvard, 03/31/2018