

Bestop Trektop NX Soft Top - Black Diamond (97-06 Wrangler TJ, Excluding Unlimited)

Installation Time: 120 Minutes

Tools Required:

- ✓ Philips screw driver
- ✓ Drill with Philips tip
- ✓ T20 Torx bit

Installation Instructions:

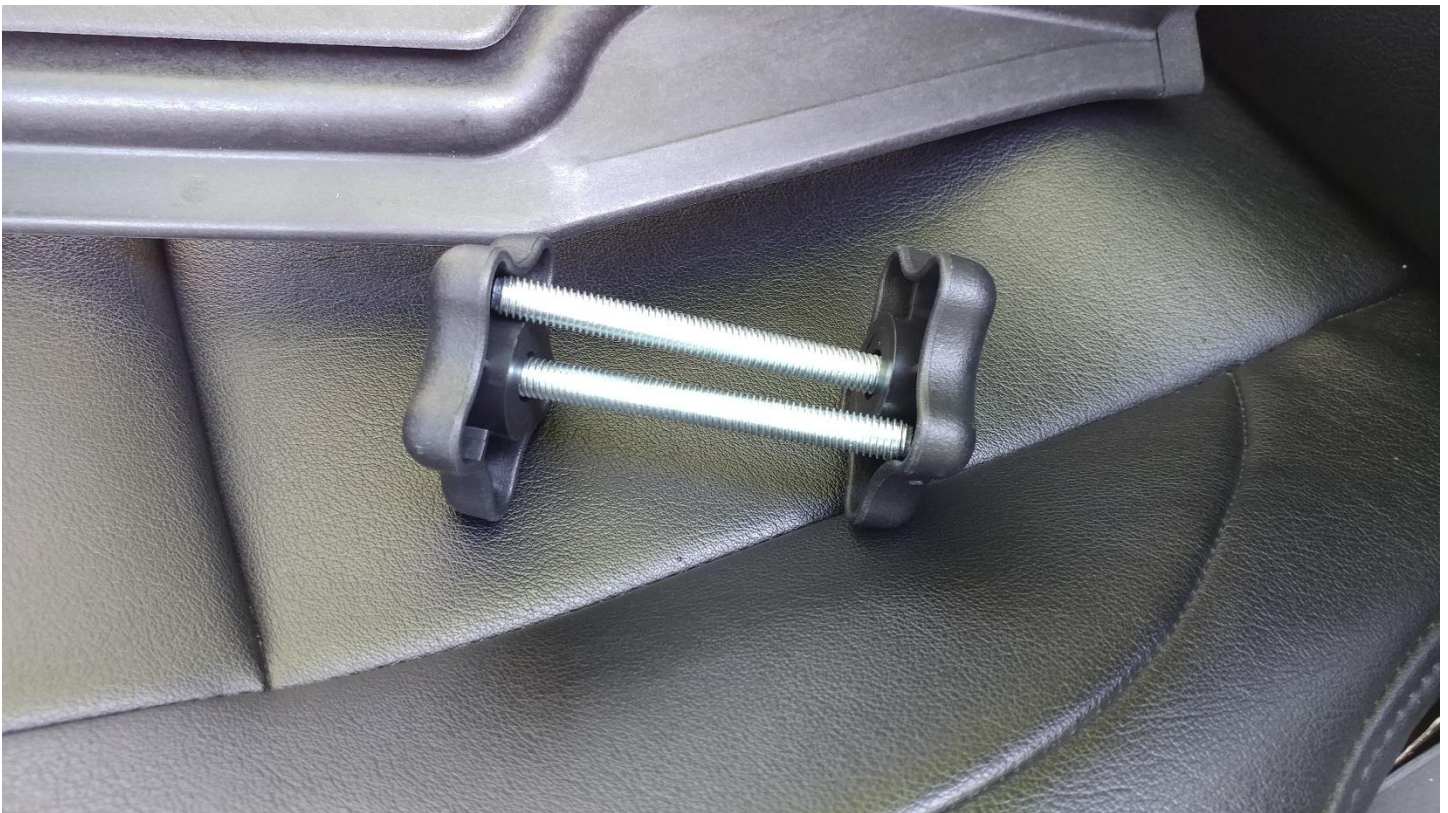
1. Before, after existing hard top or soft top removed



2. Find the door surrounds for the Driver and passenger sides



3. Locate 4 of the screw in bolts to secure the door surrounds to the roll bar. 2 per side



4. Line up the lower pin on the door surround with the factory hole on the tub.



5. Push the upper portion onto the roll bar. Lining up the holes for the next step.



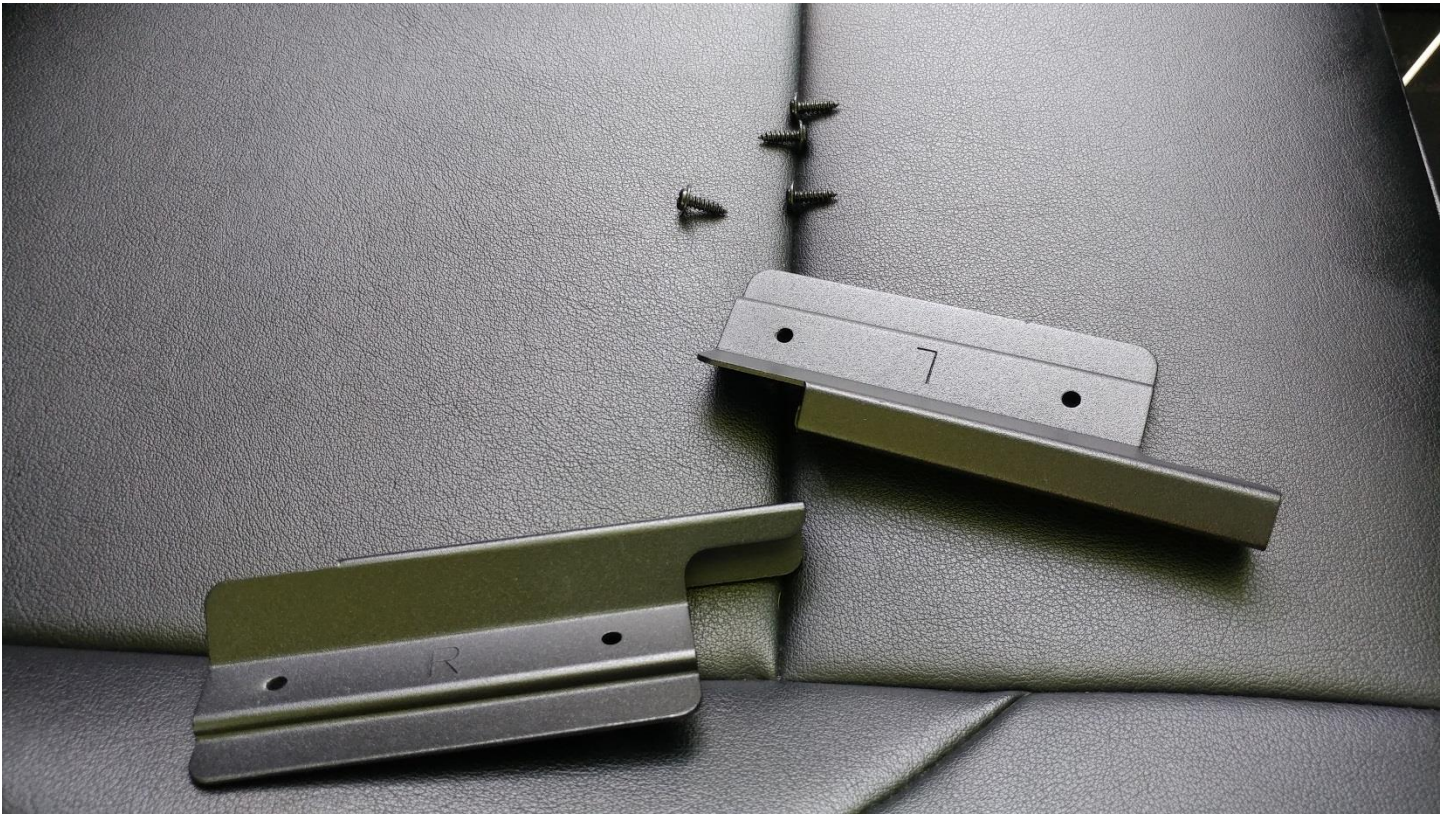
6. After lining up the holes on the upper roll bar insert the bolts



7. Snug the bolts. They should fully insert; cross threading is easy. Make sure they are properly aligned.



8. Locate the rear tailgate bar brackets



9. Locate the pan head/washer style screws. 4 – 2 each side



10. If your jeep had a factory soft top. There may already be brackets in this location. They are secured with T20 torx screws.



11. Remove the T20 torx



12. Install the Best top brackets. L and R are in respect of standing in the rear of the Jeep facing forward.



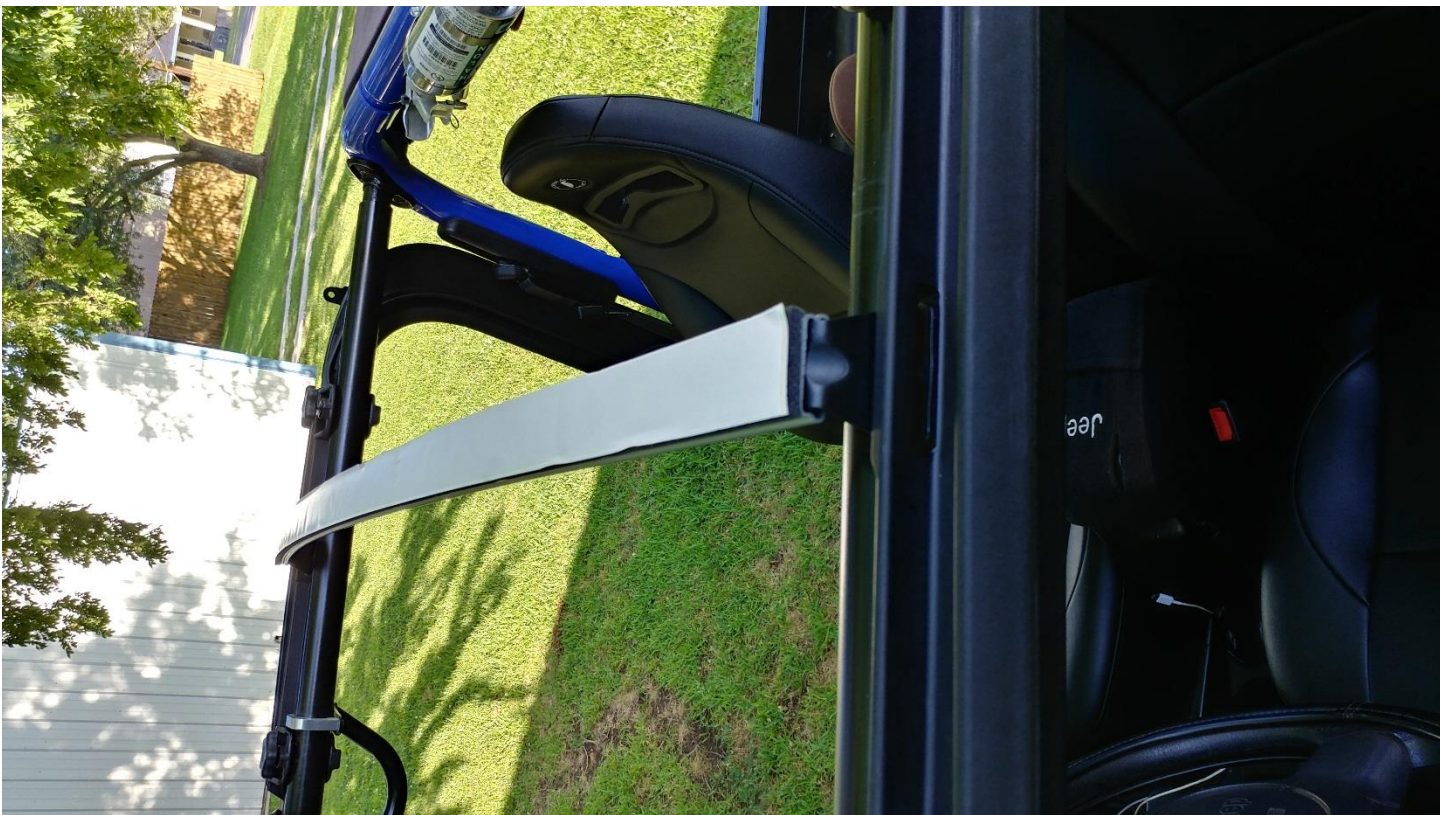
13. Locate and install bar over the driver and passenger seats



14. Clip the tabs into the slots on the door surrounds



15. After installing remove the white protective paper



16. Locate the header and sunrider bars



17. Locate the silver pan head screws 4 – 2 per side



18. Line up and install each sun rider bar. The lower mounting point should be pointing inward



19. Lay the header in side of the cloth top



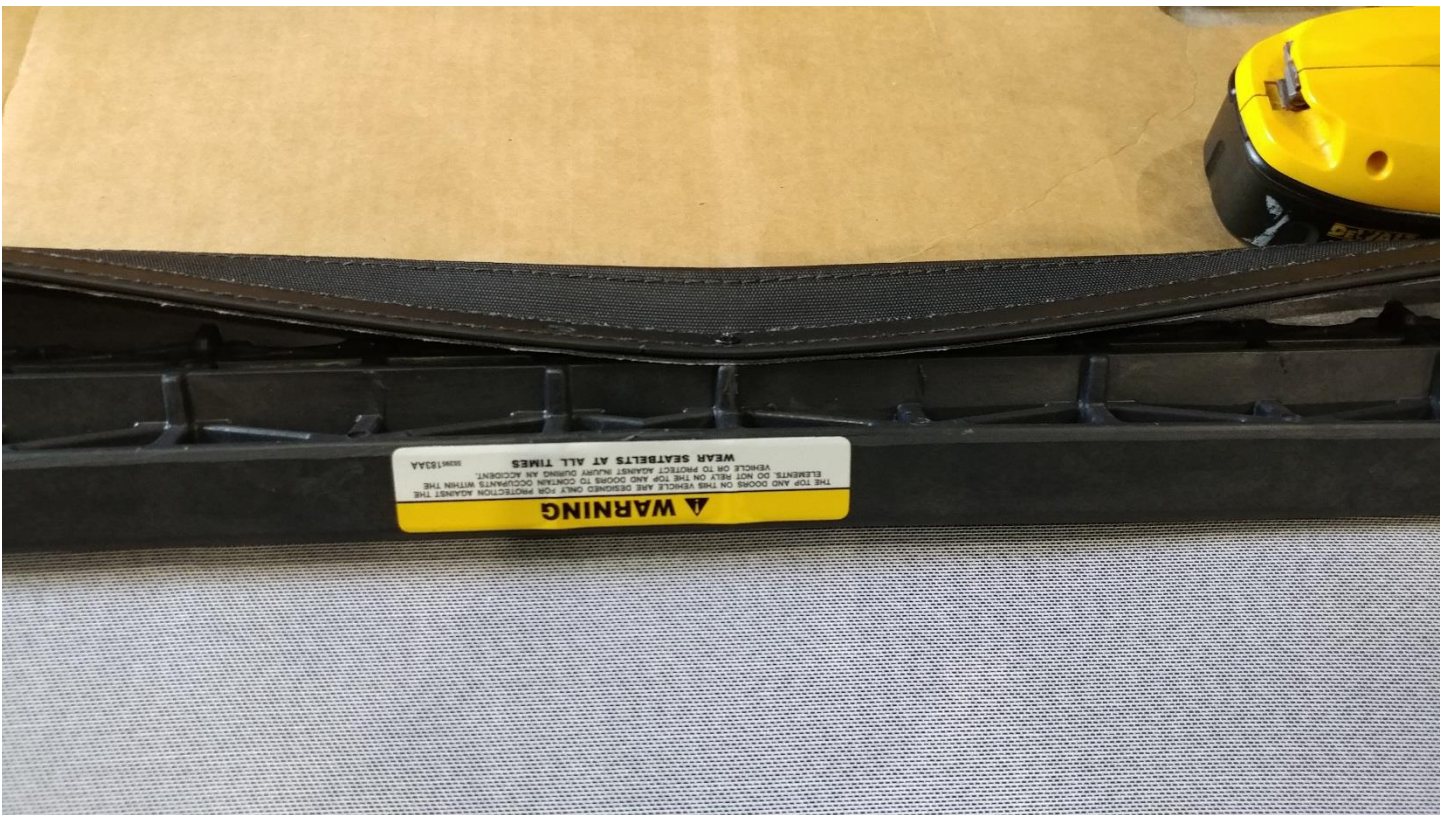
20. Slide the header into the pocket on the cloth top



21. Starting with the center hole line it up with the pre-formed holes in the header



22. Secure cloth starting with the center screw hole



23. Locate the semi counter sunk screw for the 2 outer locations



24. The cloth and header will have pre-punched holes





25. Header complete



26. Locate the rear support bar



27. Insert the rear support bar into the pocket at the back of the cloth top



28. Using the Z clips secure the bar on both sides



29. Rear support complete



30. Lay the soft top onto the Jeep and secure the sun rider bars. Line them up and pull inward on the cone shape



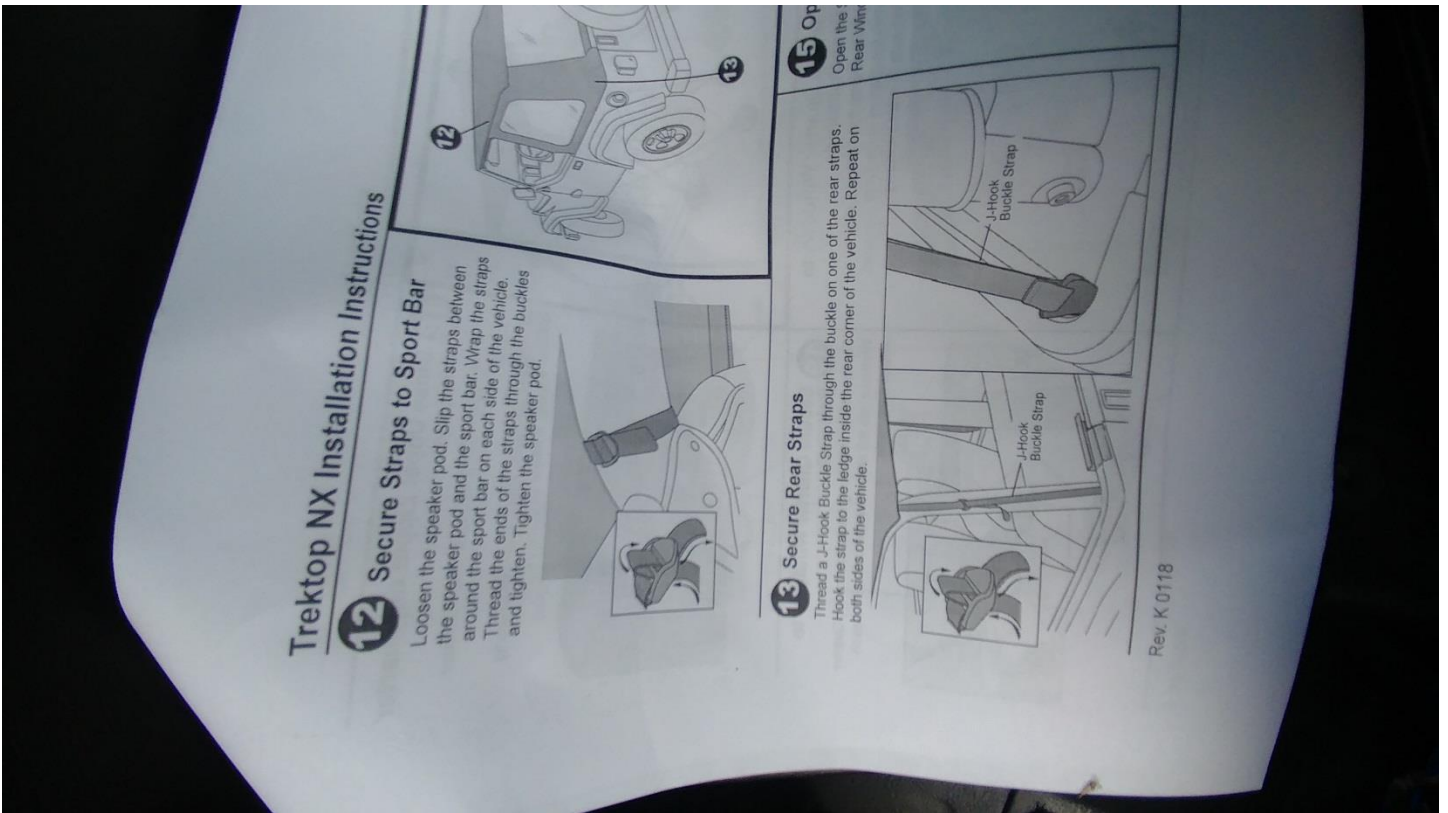
31. Installed



32. Secure the front clips



33. Secure the rear straps. Route the strap through the buckle as shown



34. The buckles will look backwards



35. Fold back the sun rider feature



36. Slide the rear window along the channel at the top of the cloth



37. Slide the tailgate bar along the bottom side of the rear window



38. Zip $\frac{1}{4}$ of the top of the driver side window



39. Zip $\frac{1}{4}$ of the rear window on the driver side



40. Insert the driver side window into the door surround



41. Insert the lower portion of the window into the seam on the tub



42. Finish zipping the windows starting with the driver side



43. Close the sunrider top and latch the front clips



44. Installation complete



Installation Instructions Written by ExtremeTerrain Customer T. Boyer 5/29/2018.