

ARB Fire Retardant Awning 2000 - 78.74 in. x 98.43 in.

Installation Guide for Jeep Wrangler '07-'16 2-Door JK

Installation Time: 1 Hour

Tools Required:

- ✓ Box Cutter/Knife
- ✓ 10mm Wrench

Installation Instructions:

Note: This product requires a roof rack to be previously installed onto the Jeep Wrangler. Additionally, a mounting bracket is required to properly install (not supplied).

1. Carefully open the package using a box cutter or knife (Figure A) and ensure the hardware is included and undamaged.



Figure A

- Using supplied hardware, install two bolts into each track on the rear of the awning (Figure B).



Figure B

- Connect the bolts to the mounting bracket using the supplied nuts (Figure C).



Figure C

- Using a 10mm wrench, tighten the supplied nuts (Figure D).



Figure D

- Do so with the other mounting bracket, as well (Figure E).



Figure E

6. With the awning securely tightened to the mounting brackets, slide the protruding end of the mounting brackets under the roof rack and attach (Figure F).



Figure F

7. Place the nuts on the backside of the mounting bracket around the roof rack (Figure G).

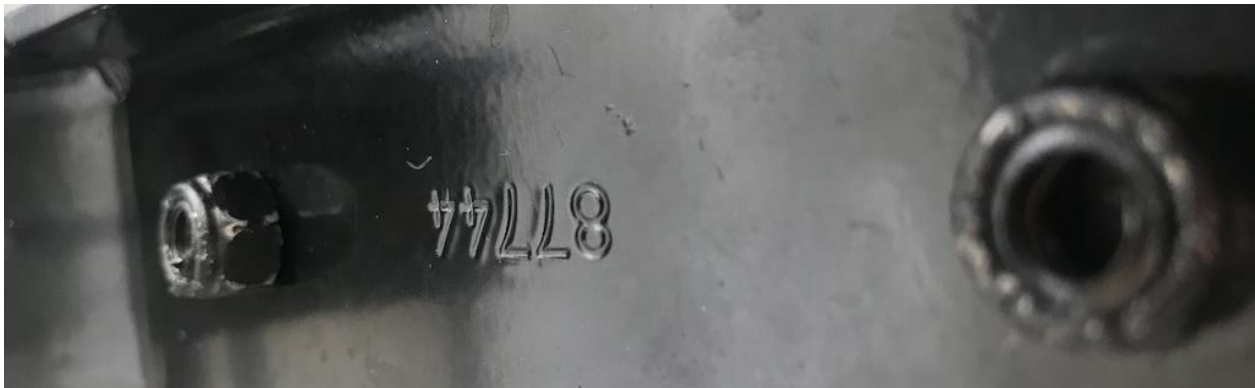


Figure G

8. Tighten the nuts down so the awning is securely attached to the roof rack (Figure H).



Figure H



Before



After

Installation Instructions Written by ExtremeTerrain Customer J. Sandlin 04/02/2018