

Barricade Trail Force HD Front Bumper Installation Guide For Wrangler JL

Installation Time: 2 Hours

Tools Required:

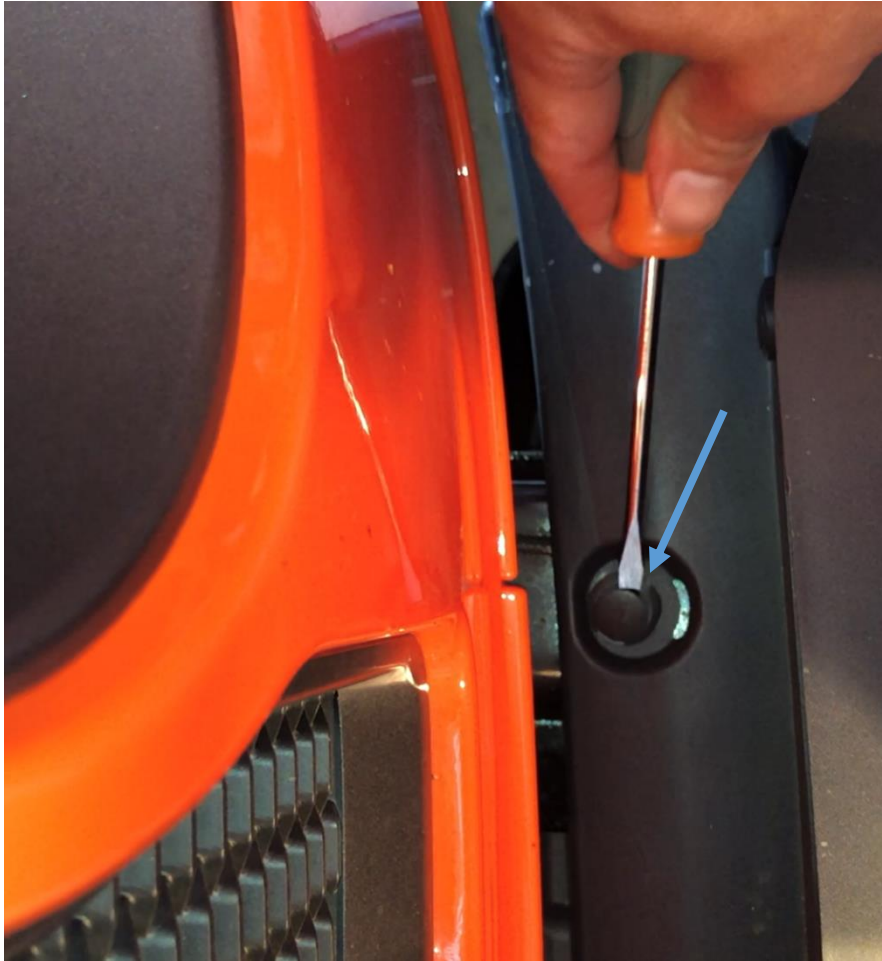
- ✓ Trim removal tool or small flathead screwdriver
- ✓ Ratchet
- ✓ 18mm Deep Well socket
- ✓ 16mm socket
- ✓ 13mm socket
- ✓ 13mm wrench
- ✓ 8mm socket
- ✓ Torque Wrench
- ✓ Zip ties

Before:



Installation Instructions:

1. Loosen the upper splash guard: use a trim removal tool or a small screwdriver to remove two pop-clips



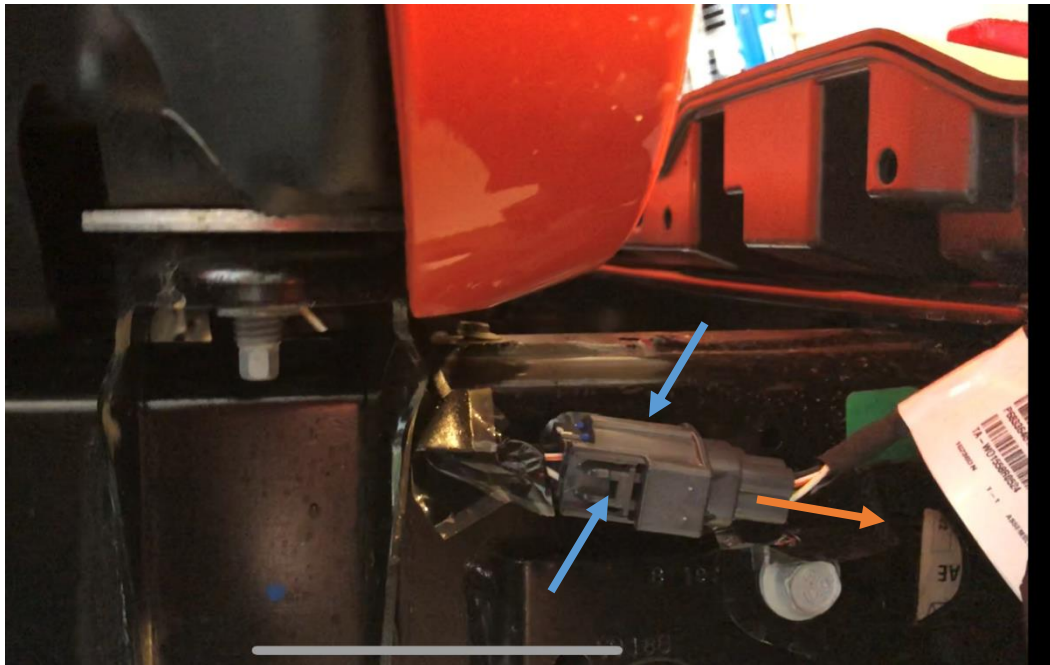
2. Remove lower splash guard: use a trim removal tool or a small screwdriver to remove pop-clips (blue) and then use a 8mm socket to remove the two screws securing the splash guard to the skid plate (orange).



3. Remove Skid Plate: remove two bolts (orange) then slide whole skid plate down to release from clips (blue)



4. Unplug fog light harness: unplug the wiring harness from the vehicle by squeezing the clip (blue) then pulling it out (orange)



5. Unbolt bumper: may need to use a breaker bar or torque wrench to remove all the nuts (four on each mount).



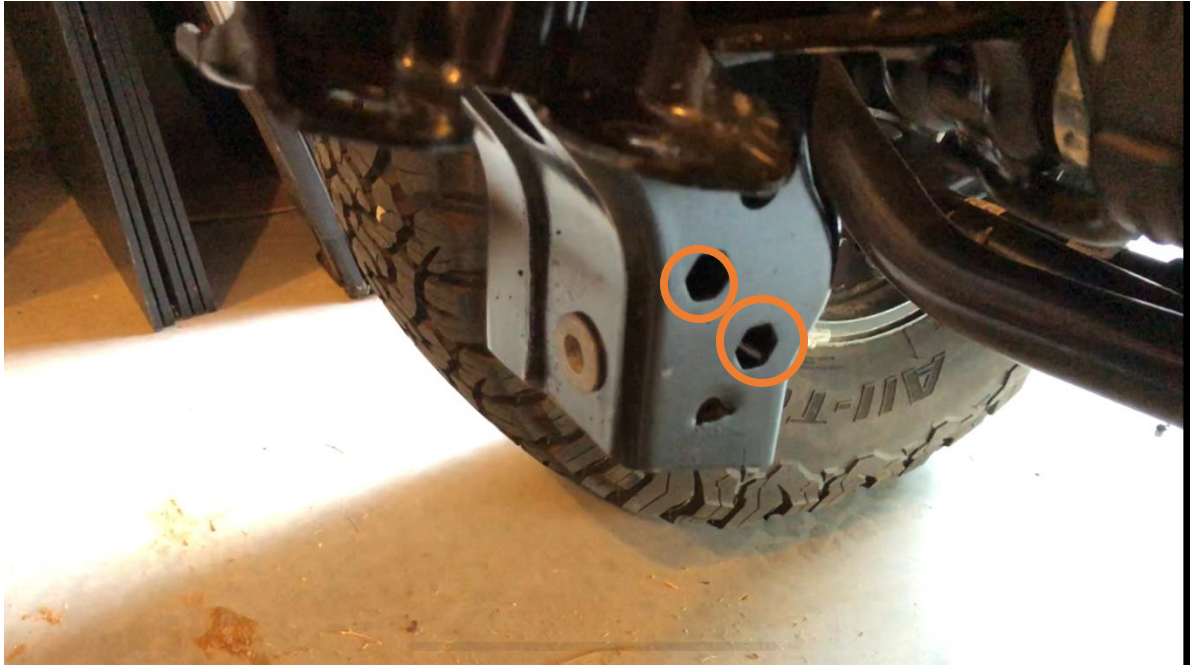
6. Remove bumper support brackets and bolts with 16mm socket. These will not be used with the skid plate per the manufacturer. If desired, the interior brackets may be reinstated without affecting the skid plate.



7. Remove bumper: lift bumper off frame using the recovery hooks



- Put a two m8 bolts in each lower frame mount



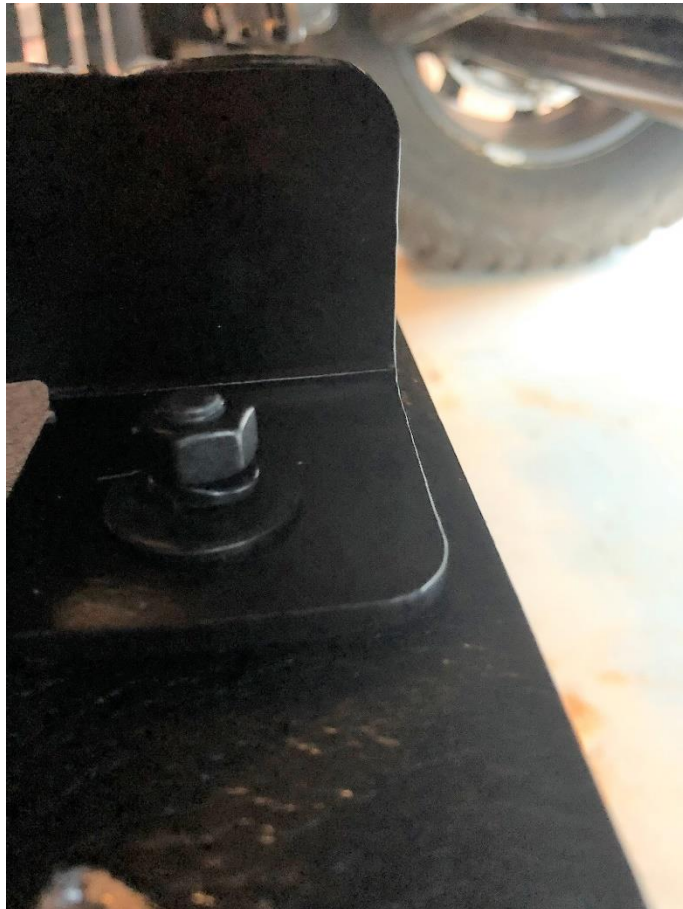
- Attach the brackets. The brackets are marked D for driver and P for passenger. Slide the brackets on then a flat washer, lock washer, and nut. Leave some play.



10. Zip tie the skid plate to the rear of the lower outside holes of the bumper frame mounts.



11. Secure the skidplates to the brackets with an M8 bolt. The bolt should come up from the bottom, with the flat washer, lock washer and nut on the top of the bracket.



12. Cut the zip ties and reattach the bumper. The top of the of the skid plate will seat between the bottom of the bumper and the mounts.



13. Hand thread the nuts back onto the bumper mounting bolts and torque down to 66 ft. lbs.

14. Tighten all other nuts and bolts in the skid plate brackets.

15. Reinsert pop clips in upper splash guard.



16. After:



Installation Instructions Written by ExtremeTerrain Customer Justin Ames 08/23/2018