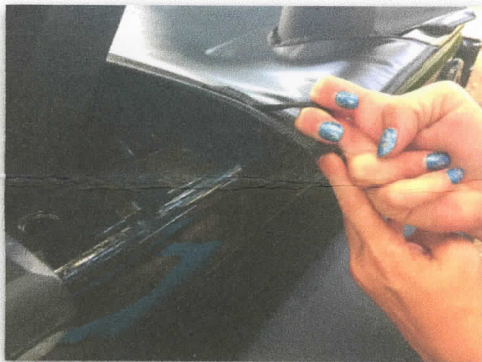




Step 1: Connect one of the flat hooks to the tub rail just behind the seat back.



Step 3: Insert the white attachment channel tabs under the tub rails as shown. Start with the rear corner tabs then the sides. Insert one side, then move to the other.

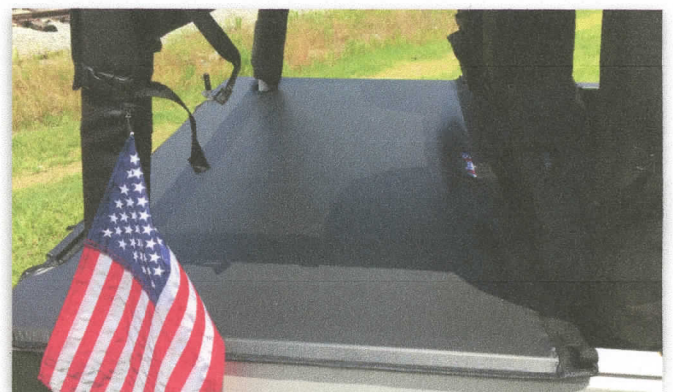


Step 2: Repeat on the other side. Please keep in mind, this is a TIGHT fit. You will have to PULL to get it to hook. We make the tonneau extra tight to avoid sagging over time. **You may find the installation easier if you lay the tonneau out across the tub in the sun to warm it up.** This will allow the vinyl material to stretch a little bit.



Step 4: Lastly, pull the flap that goes over the tailgate down tight and the magnets will connect. **Adjust the front hooks for a tight fit by pulling forward if necessary.**

Use and care instructions: For warranty purposes it is highly recommended that your Tonneau should be rolled for storage and stored in a safe location. Clean only with water and a soft cloth. Defects in materials and workmanship are covered under warranty, however we cannot be responsible for misuse, improper storage or trail damage.



Your new tonneau is now fully installed and ready to go!