

97-02 Jeep Wrangler TJ Corbeau Moab Seat install

Installation Time: 3 - 4 Hours

Tools Required:

- ✓ T50 male star bit
- ✓ 13 mm socket
- ✓ 9mm Allen wrench (provided with seat brackets)
- ✓ 10mm socket
- ✓ 10 mm open end wrench/Box end wrench
- ✓ 13 mm open end wrench/Box end wrench

Shown in this install are the Corbeau Jeep TJ (Adapter) 97-02 Seat Brackets. They are manufactured to adapt to the 1997-2002 Jeep TJ Wrangler stock seat sliders. Which will retain the "Fold and Tumble" factory feature on the passenger side.

Seat Bracket Driver Side - D1120NS

Seat Bracket Passenger Side - E1121NS

Installation Instructions: Passenger Side

1. With the Passenger side seat slide pushed all the way to the rear of the Jeep remove the 2 – 13 mm Bolts



2. "Fold and Tumble" the Passenger side seat forward



3. Remove the 1- 13 mm Bolt and 1 - T50 Star Bolt

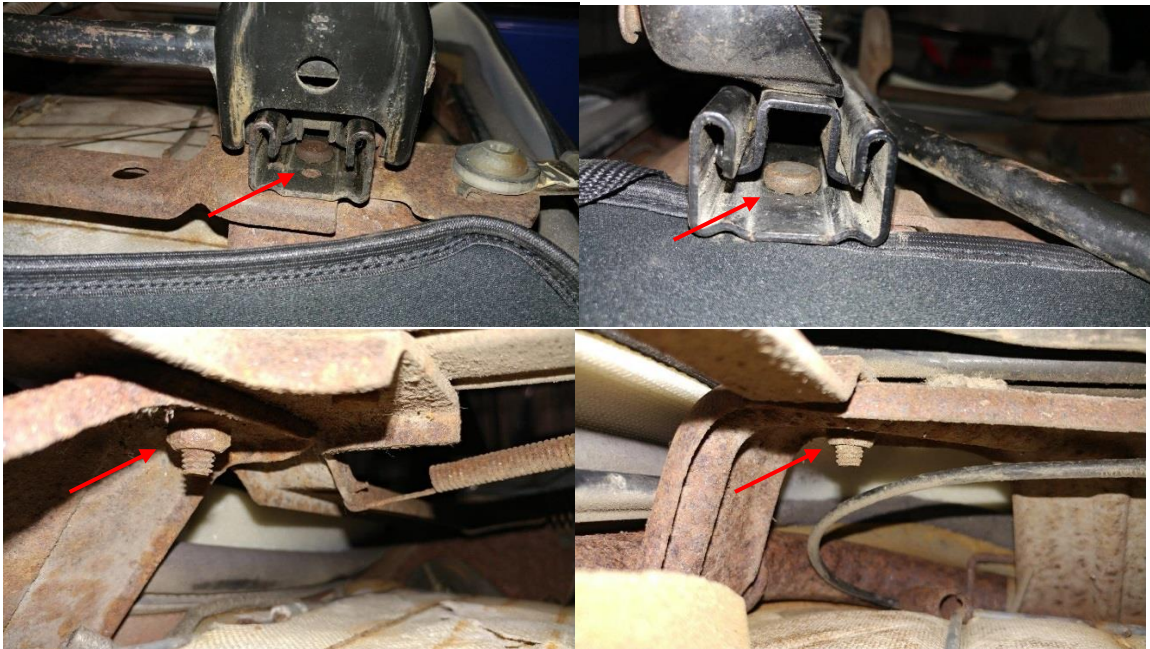


4. Pull the passenger seat from the Jeep

5. Lay the seat so that the slider brackets can be accessed



6. Remove the 4 – 13 mm nuts from the factory seat slider studs. May require a ¼" drive shallow socket, it is a tight fit.



7. Attach the Corbeau Seat Bracket Passenger Side - E1121NS to the Corbeau Moab Seat bottom with the provided Allen screws (provided with seats) and provided 9mm Allen wrench (provided with seat brackets)



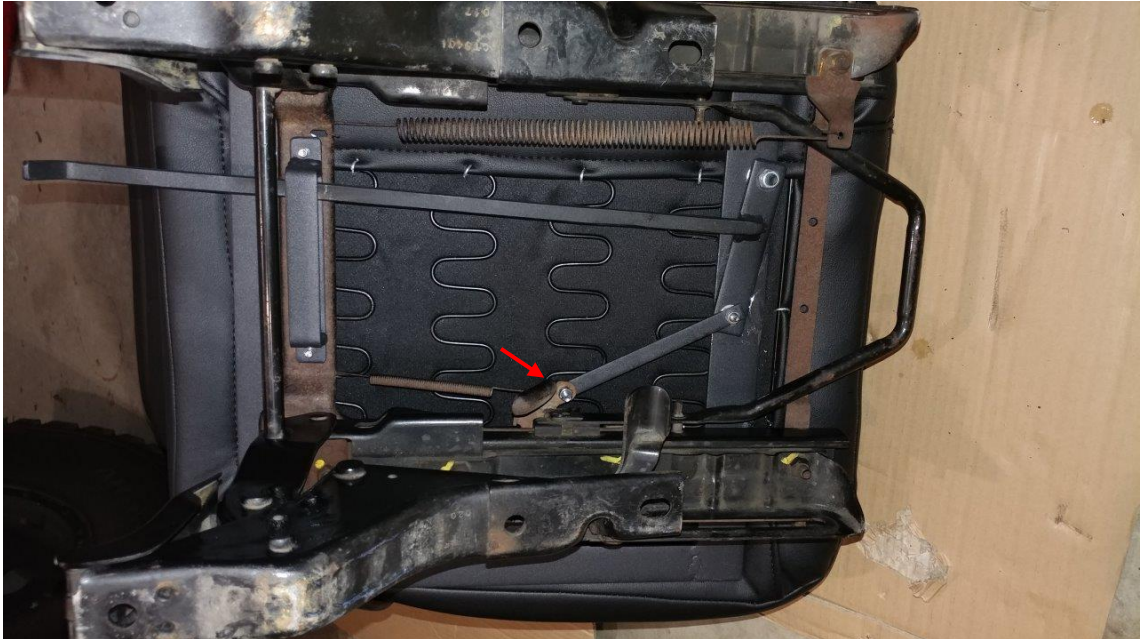
8. Install the Corbeau slider handle limiter with the provided 2 – 10 mm bolts into the factory holes



9. Place the passenger side seat with seat bracket adapter attached on to the factory seat “Fold and Tumble” assembly studs. Line up the front and rear before applying pressure.



10. Attach the Corbeau slider arm to the factory slider arm, using the provided 10 mm bolt and nut



11. Reinstall the 4 – 13 mm factory nuts onto the factory “fold and tumble” assembly studs. This will be a very tight fit, a 13 mm open end wrench/Box end wrench will be required.



12. Reinstall the new seat with the factory “fold and tumble” assembly attached into the Jeep. Secure the 3 – 13 mm bolts and 1 – T50 Star Bolt

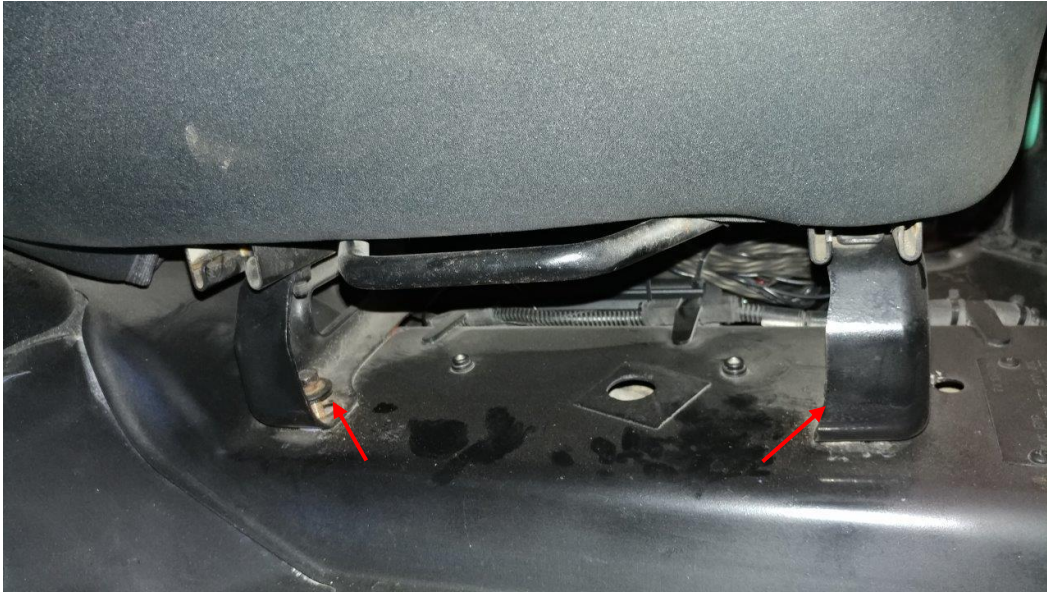


13. Passenger side install complete. Pull and shake seat to check for any loose bolts. Check factory “fold and tumble” function.



Installation Instructions: Drivers Side

1. With the Driver's seat pushed all the way to the rear using the slider. Remove the 2 – 13 mm bolts



2. Using the slider push the Driver's seat all the way forward. Remove the 1 – 13 mm bolt and 1 - T50 Star Bolt



3. When removing the seat from the Jeep be very careful and unplug the seat belt light harness connector. Located on the side closest to the center console



4. Lay the seat so that the slider brackets can be accessed



5. Remove the 4 – 13 mm nuts from the factory seat slider studs. May require a 1/4" drive shallow socket, it is a tight fit.



6. Attach the Corbeau Seat Bracket Driver Side - D1120NS to the Corbeau Moab Seat bottom with the provided Allen screws (provided with seats) and provided 9mm Allen wrench (provided with seat brackets)



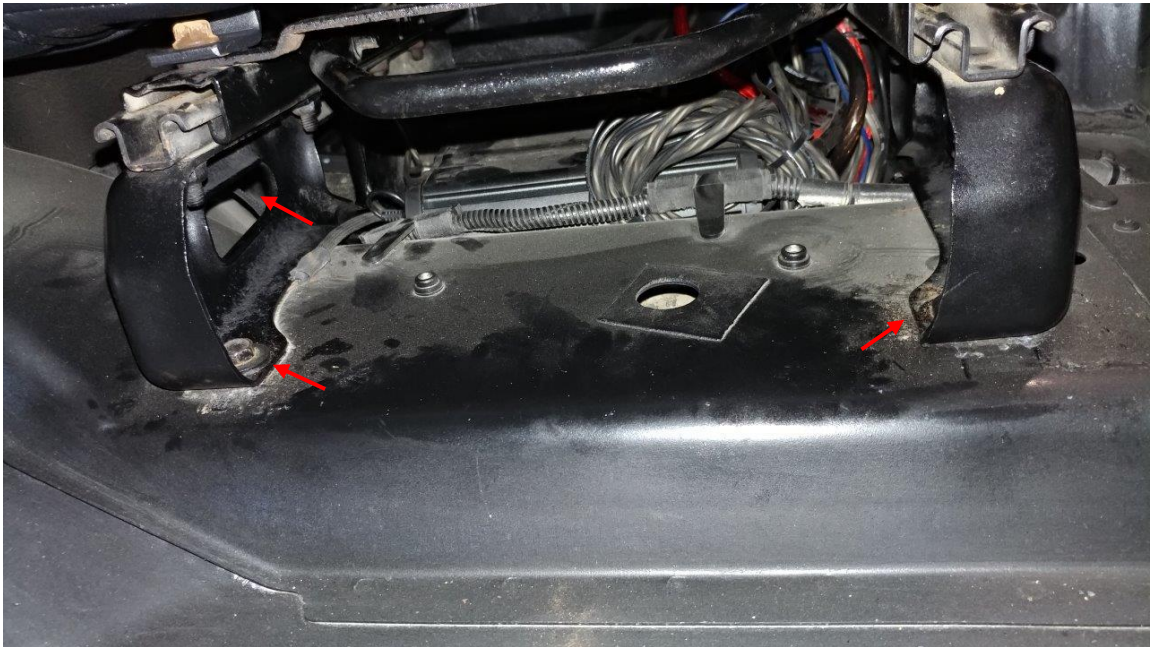
7. Place the Driver's side seat with seat bracket adapter attached on to the factory seat assembly studs. Line up the front and rear before applying pressure.



8. Reinstall the 4 – 13 mm factory nuts onto the factory assembly studs. This will be a very tight fit, a 13 mm open end wrench/Box end wrench will be required.



9. To reinstall the new seat into the Jeep, first reconnect the seat belt light harness connector. Located on the side closest to the center console. Second secure the 3 – 13 mm bolts and 1 – T50 Star Bolt



10. Driver side install complete. Pull and shake seat to check for any loose bolts. Check the factory slide function.

